

Thank you for choosing the X3000 driving recorder!

In addition to driving the local recorder of common features, added three major features:

- (1) built-in dual camera, can take before and after the two images;
- (2) increase the GPS module to a complete record of driving track. Use of random special software, you can watch the video on the computer at the same time, through the Internet to connect to Google Maps, the map showing lane track, trace routes on the vehicle.
- (3) built-in gravity sensor, G-Sensor, gravity sensor can record the information. Use of random specialized software on the computer watching the video at the same time, gravity sensor data is read, tracing the course of the traffic incident and abnormal.

In order to better play the maximum performance driving recorder, please read carefully before you use this manual (and accessories of the machine design and specifications subject to change without notice).

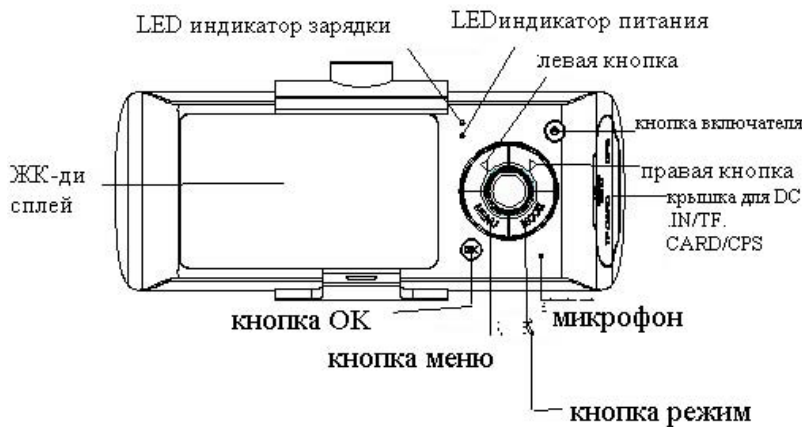
Catalog

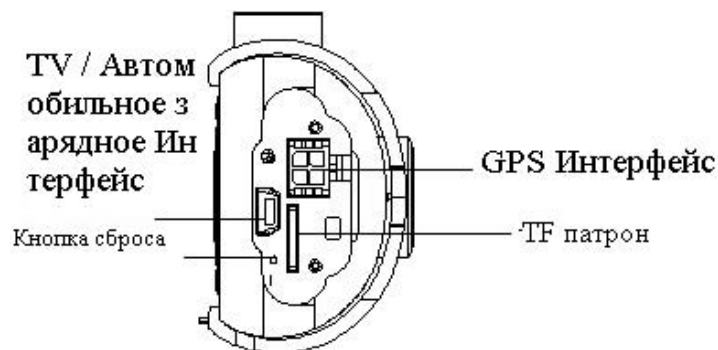
Product structure	
Started to use the road recorder	
To charge the battery	
Insert a memory card	
Adjust the lens position	
Open and close the machine	
The basic operation of traffic recorder	
Switch mode	
Set menu	
System Settings	
How photography	
Start and stop set as	
Open, close the audio	
Image data playback and management	
Video playback	
Computer access to documents on the machine	
The machine reset	
Features	

Technical Specifications

Accessories table

Product structure

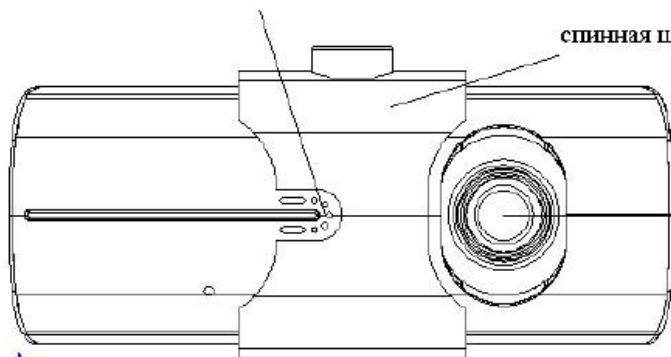


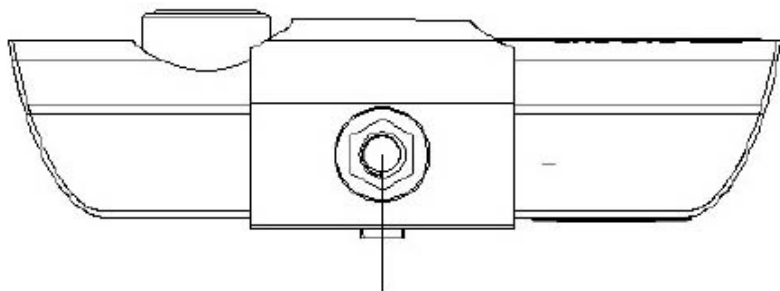


спикер дыра

спинная шина

объекти





Кронштейн гайки отверстие

Recorder began to use the road

Charge the battery

There are two ways to charge the battery:

1. Use USB cable to connect the machine to the computer charge;
2. Using the supplied vehicle power charger.

The process of charging the red charging lamp lights up after the indicator goes off.


The charging time takes about 240 minutes.

Insert a memory card

The TF (Micro SD) memory card according to the direction of the fuselage, straight forward slot until you hear a "click" sound.

Remove the card: look inside to promote TF card, the card pops up immediately after removal.

Note:

Memory card for the first time this unit, because the memory card format is not compatible with the machine, must be included with the machine or the machine tool software  **ADR Player** 270 Technology C to format the memory card (memory card

does not support the format of the computer). Formatting the memory card will permanently delete all data, including protected images, and can not be restored. Thus, in the format the memory card, back up important data.

If you can not use the machine to format the card, first on the computer with the

software

supplied with the format.

Adjust the position of the lens

The front of the lens to the upper and lower 20-degree rotation, in order to better meet the driving recorder in a fixed location, access to good shooting.

Open and close the machine

Power on: press the power button once, the red power light is on.

Off: long press the power button once, the red power light goes out.

Note: driving recorder in the low-low battery power will be prompted to automatically shutdown.

The basic operation of traffic recorder

Switching mode

This unit has two operating modes: video and playback.

Press the MODE button to switch.

Set menu

Press the MENU button, the unit enters the setup menu page, then "Menu Settings" field is the blue background.

In the menu settings page, left-right to select the desired setting field; press

"OK" button to accept the settings, press MENU key to exit the menu.

System configuration: The viewfinder can preview mode, the system can be set.

Video mode: dual lens / mirror front / rear mirror;

Time setting: left-right to adjust the hours, press the OK button to confirm exit;

Format: Press OK to select Yes / No;

TV format: set the NTSC / PAL;

Beep: on / off;

Record: On / Off;

Language: English / German / French / Spanish / Italian / Portuguese /

Traditional Chinese / Simplified Chinese / Japanese

Screen Default: on / off;

Automatic Video protection sensitivity: low / normal / high / off automatic recording protection;

(This function sets the gravity sensor automatically starts recording sensitivity)

Frequency: 50HZ/60HZ.

How to Photography

Start / stop recording:

In shooting mode, press the OK button to start recording, then click the OK button to stop recording.

Driving recorder memory card inserted at boot time and will automatically start recording.

On / off the audio:

In the recording process, press the left button, can quickly turn on / off the audio image file.

Image data playback and file management

Press the MODE button to enter playback mode, the screen shows the last video file playback screen.


Video playback:

Left-right to select the desired playback of audio and video files

Press the OK button for audio and video file playback and pause.

Computer access to documents on the machine

The machine does not support the USB protocol, the computer record of the machine access to documents from the IF card can support equipment (such as card readers) to complete.

The machine for the first time into the memory card and complete format, automatically generated on the memory card dedicated  software

tools, computer access to documents on the machine must be carried out by this tool.

Note:

(1) For ease of use, and to prevent the memory card is abnormal, causing damage to software tools, recommended tool to save the backup to your

computer.

(2) computer operating system must be Windows 2000/XP/Vista/Windows 7, MAC OS x 10.3.6 above.



X2Player.exe

JWD Technology C.

Use of the software:

Using TF card reader to read out the image of the document information.

User in the "My Computer" on the disk can be seen under TF card 3 files:
ap.bin, Default_Folder.ini



X2Player.exe
JWD Technology Co

1. Run software tools.
2. Open the player and play video documentation.

Click



Open player.

开启




密码:

☒ 磁盘

H:\




Select the disk where the path to TF card, then click "Apply", within the document and automatically load the card play.

Click  controls to control playback status: from left to



right, respectively to achieve Slow forward / stop / playback (pause) / Fast Forward.

3. Select the dual-lens channel:


Click  Playback control selectable dual-lens channel images: dual-lens / mirror front / rear mirror.

4. movie archive:





Select the file you want to save the video  , Click  the pop-up screen to save the file path, select, click "OK" to save selected files.

5. Photo Archive:

The need to save the selected screen images, click  Save the file path to pop-up screen, choose the path, click "Save."

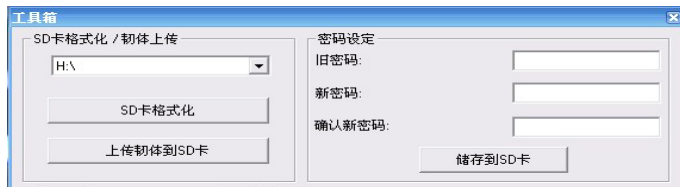
6. Delete the document:

Select the video files do not need  , click  the "OK / Cancel" option, select "OK" on the selected video files to delete.

7. toolbox:

Toolbox can do the following: SD card format / upload software to the SD Card / SD Card Speed Test / map selection and set the user password.

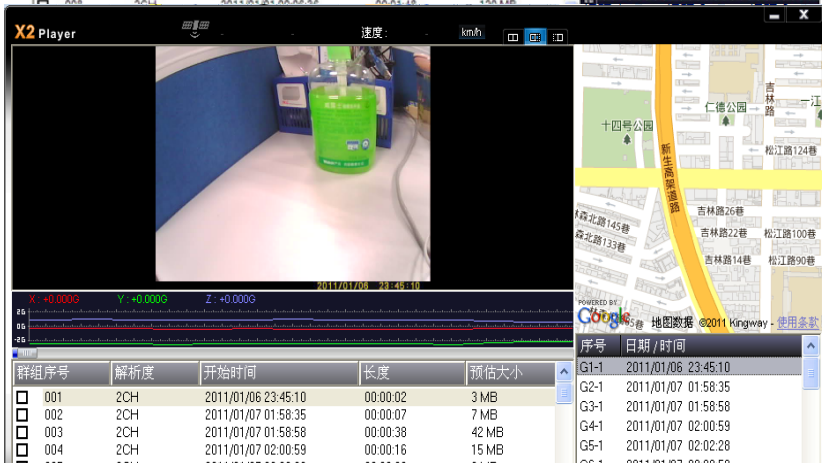
Click  Can enter the toolbox.




8.




9.



Click , On the computer while watching the video, read and display the gravity sensing data, retrospective in driving the process and unusual incidents

10. Other operations:

Click  From left to right, respectively, to achieve the following: Repair Video / unlock protected / select the display size.

Reset the machine

When the unit is operating properly due to abnormal situations, you can press the reset button then turn the machine return to normal.

Features

- Ultra small size, the first ultra-wide angle lens up and down 140 degrees and can be rotated 20 degrees and 120 after the high-resolution mirror the perfect combination of ultra-wide-angle lens design, more convenient for a variety of occasions multi-angle, high resolution video capture.
- Built-in 1 / 4 inch low-noise high-quality sensor, can capture the occasion in the dark ultra-clear picture
- Built-in rechargeable lithium side edge video functions
- Built-in microphone / speaker
- Support for high-capacity Micro TF card

- Start the car automatically start recording function
- A delay start function, to prevent damage to the car to launch an instant pulse current machine
- GPS positioning scan
- Gravity sensor SENSOR

Technical Specifications

LCDScreen Size	2.7 “ （16: 9）
Lens	before the lens ultra wide 140 degree / 120 degree super wide angle
Options	Language English / German / French / Spanish / Italian / Portuguese / Traditional Chinese / Simplified Chinese / Japanese
Video format	AVI
TF memory card slot	Micro TF
Microphone/ Speaker	Built-in
TV Output	NTSC/PAL
TV output and DC	5V 500MA
Battery	Built-in lithium polymer battery
System Requirements	Windows 2000/XP/Vista/Windows 7, MAC OS x 10.3.6 以上

Note: This product is to retain the right to change design and specifications without notice.

Accessories:

vehicle power supply; TV cable; car bracket;
GPS modual; manual